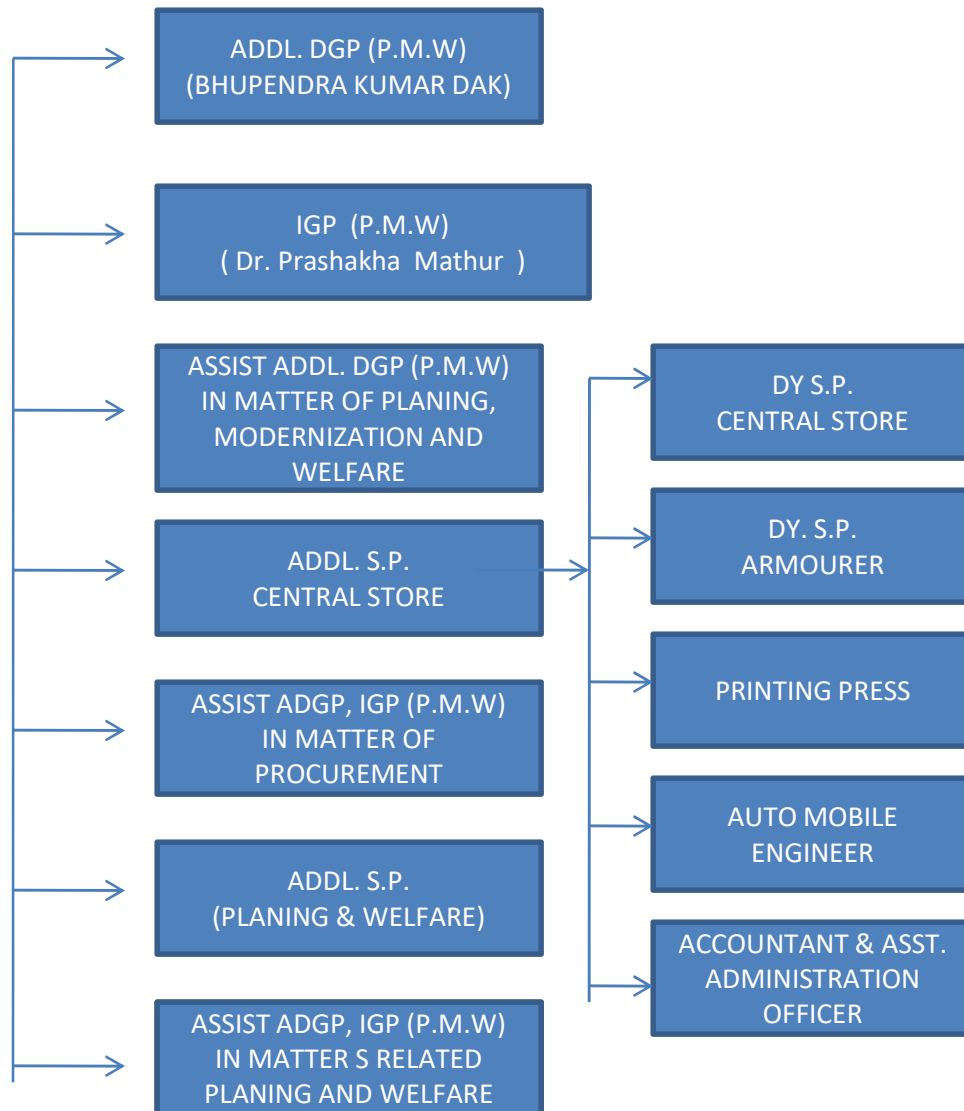


# PLANNING & WELFARE BRANCH, PHQ



## Allocation of Works :-

- Welfare
- Police Building (Administration & Residential)
- Budgeting, sanction and release of funds and other financial matters, including audit matters concerning the PHQ
- Provisioning of Stores.
- Modernization including Finance commission
- Wrist/Civil suits concerning provisioning matters.
- Staff Council / Joint Consultative machinery
- Police funds including Benevolent & mess funds.
- Retirement benefits (Pension etc.)
- Police annual group insurance scheme
- Revision and new sanction of allowances